

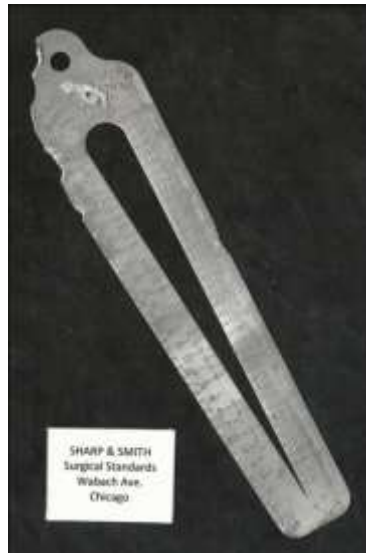
# American Veterinary Medical History Society

"Devoted to the Diffusion of Veterinary History"

---

## Vintage Veterinary Instrument #10

### Catheter Gauge



This thin strip of aluminum is a **catheter gauge**. With inches marked on the left outer edge and centimeters on the right outside edge, English catheter sizes are given on the inner left edge across from French sizes on the right inner side. As an example, English catheter size 28 is equivalent to the French catheter size 40.



The most popular urinary catheter in veterinary medicine is the 8 French, which would be a 2 English.



Dr. Born explains that this convenient gauge would be handy for quick checks in a large hospital that might have many sizes of catheters in its inventory. From a distance, one could not read the numbers, but only need to look at the gauge.

Instrument and description provided by Fred J. Born, DVM (Fond du Lac, Wisconsin), March 27, 2021.